

FLOOR PLAN

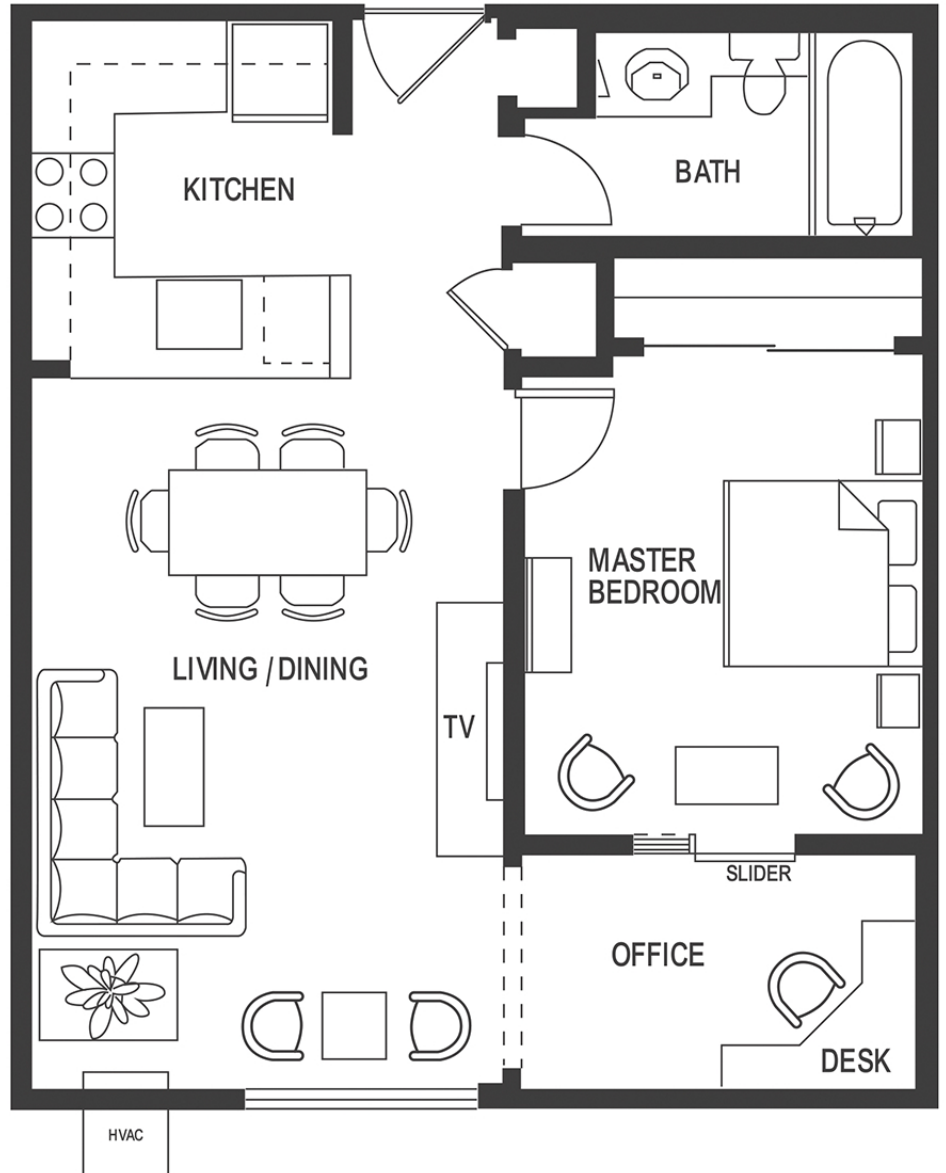
THE ROYAL LEXINGTON

1 Bedroom • 1 Bath • 1 Office

610-740 SQ FEET

Features:

- Full Kitchen with granite counter tops and custom cabinetry
- Washer & dryer in every unit
- Air conditioning & heating with individual climate control
- Carpet, tile and window covers
- Open floor plan with living room and dining area
- Utilities included: Electricity, water, gas and trash removal
- Unlimited Wifi
- Pet friendly
- Large Bonus Room, private patio and/or balcony and/or enclosed office



THE HERITAGE DOWNTOWN

1785 Shuey Ave. | Walnut Creek, CA 94596 | 925.943.7427

TheHeritageDowntown.com